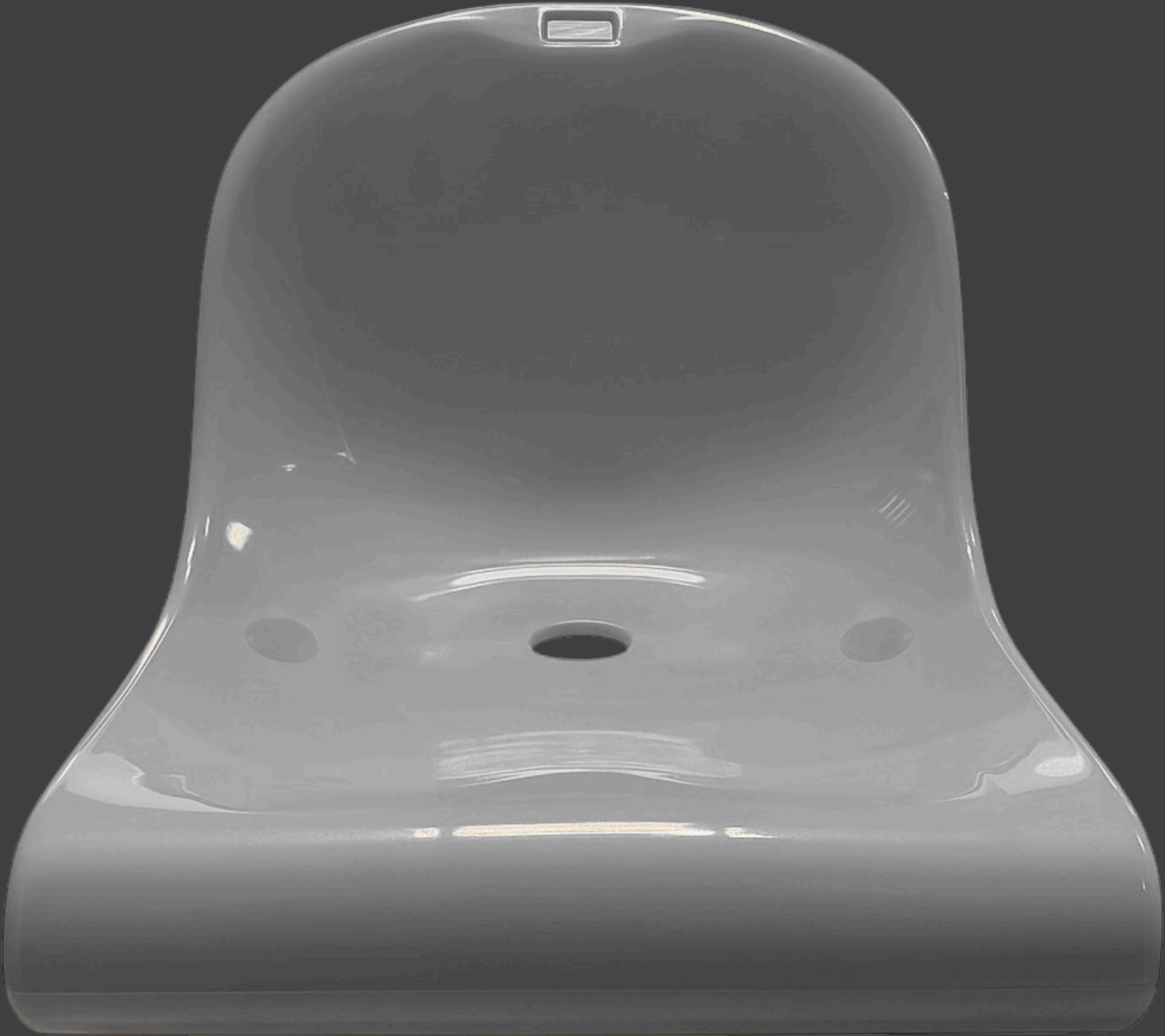


NEW!

MT-2044

TECHNICAL DATASHEET



CERTIFIED & TESTED



UV RESISTANCE
TEST



LOAD & IMPACT
TEST



DIMENSIONS
& DENSITY

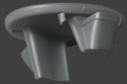


5-YEAR
WARRANTY



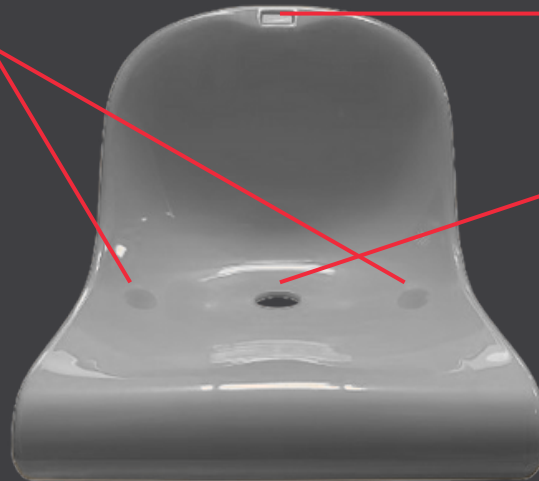
MT-2044

ANCHORING SYSTEM: 2 HOLES



THE OPENINGS ARE SEALED
WITH PP CAPS AFTER
INSTALLATION

NUMBERING PLACE, USING
STICKER OR ALUMINUM PLATE



CENTRAL DRAINAGE POINT



REINFORCED CORNER DESIGN
ALLOWS QUICK INSTALLATION AND
KEEPS THE SEAT SECURELY FIXED



MT-2044

DESCRIPTION

Product Overview

The **MT-2044** Double Backrest stadium bleacher seat is designed to deliver a durable, safe, and ergonomic seating solution for stadiums, arenas, and large public venues. Manufactured using high-pressure injection molding from premium UV-stabilized polypropylene (PP), the seat offers excellent structural strength, precise shaping, and long-term performance suitable for both indoor and outdoor applications.

Key Features & Technical Highlights

Material & Manufacturing

- High-pressure injection-molded polypropylene (PP)
- UV-stabilized material for outdoor and indoor use
- High resistance to environmental wear, scratching, and deformation

Dimensions & Weight

- Width: 42 cm
- Depth: 46 cm
- Height: 32.5 cm
- Weight: 1.8 kg
- Lightweight construction with reinforced structural ribbing

Ergonomic Design

- Monoblock seat with 32.5 cm high double backrest
- Contoured backrest provides firm lumbar support
- Softened edges enhance user safety and comfort

Surface Finish

- Glossy textured surface finish
- Resistant to scratches and vandalism
- Maintains color vibrancy and visual quality over time

Durability & Anti-Vandalism

- Reinforced rib structure for increased strength
- High resistance to impact, tampering, and heavy use
- UV-resistant additives protect against fading and material degradation

Installation Flexibility

- Suitable for installation on concrete foundations and steel structures
- Fixing with two anchoring points
- Fast and secure installation for bleacher systems

Performance & Application

- Designed for indoor arenas and outdoor bleacher seating

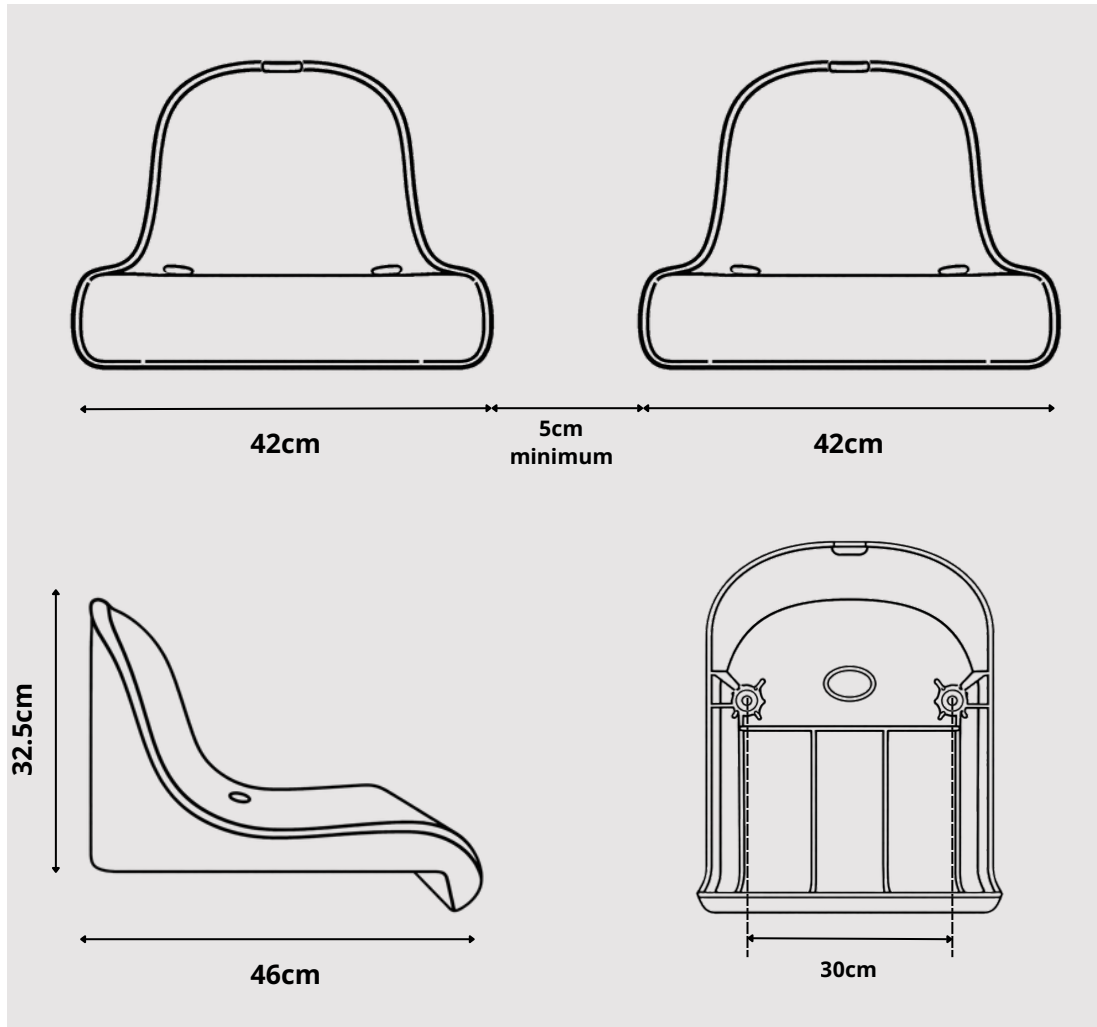
Standards, Testing & Warranty

- Tested for UV resistance, load performance, dimensional accuracy, material density, and impact resistance
- Low maintenance requirements for long-term operational efficiency
- Optimized for reduced installation time and lifecycle costs
- Backed by a 5-year manufacturer warranty covering color fading, material defects, and manufacturing defects



MT-2044

DIMENSIONS



STANDARDS, TESTING & WARRANTY

- UV resistance tested
- Static load & impact tested
- Dimensions & density tested
- Manufactured from UV-stabilized Polypropylene
- 5-year manufacturer warranty covering color fading and material & manufacturing defects

Testing conducted on representative samples. Test reports available upon request.



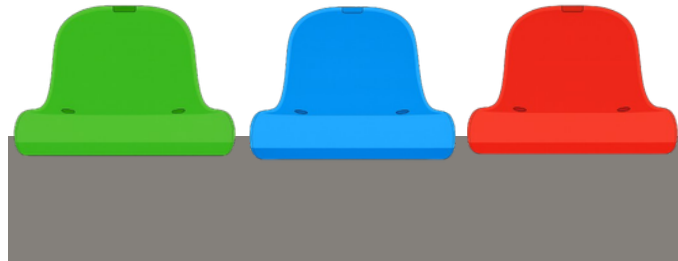
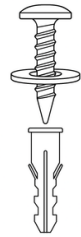


MT-2044

INSTALLATION

Concrete:

Installation is carried out using two anchoring points. Each point requires: one 6 mm screw, one 8 mm wall plug (fischer), and one flat washer sized M6.



Metal Stands:

Installation is carried out using 2 anchoring points. Each anchoring point requires one bolt, one nut, and one washer with sizes determined by the hole dimensions provided.





MT-2044

COLORS

STANDARD COLORS:

UV-STABILIZED PIGMENTS USED FOR OUTDOOR APPLICATIONS.



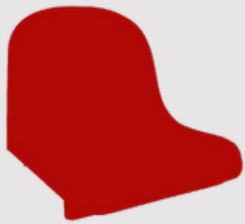
WHITE



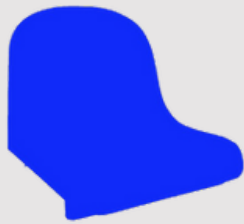
GREY



BLACK



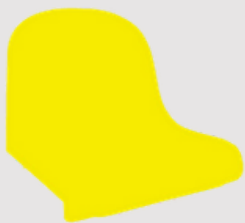
RED



BLUE



GREEN



YELLOW



ORANGE

OTHER GRADIENTS/COLORS REQUIRE A MINIMUM ORDER OF 500 PCS



MADE IN THE UAE

Scan for Website



Scan for WhatsApp



DUBAI, AL QUOZ 3, 28B STREET, BUILDING 39
TEL: +971 50 121 8308
EMAIL: info@matanah.net
www.matanah.net